

SUMMER TIME

at the

'In & Out'

No. 4 St James's Square

2010



A SUMMER'S EVENING AT THE NAVAL & MILITARY CLUB

Excellent facilities in the heart of London's Mayfair

The Naval and Military Club, affectionately known as 'The In & Out', offers excellent facilities in the heart of London's Mayfair. Located at No. 4 St James's Square, this beautiful building has retained all of the original features of its magnificent staterooms. Steeped in history and with its grand and illustrious past, this Grade II listed house is the perfect setting to impress your guests, whatever the occasion.

Inside the Club is an amazing and secluded Court Yard, this is the perfect setting for a variety of summer events, from canapé receptions to barbecues to product launches. A marquee is also available to hire which allows the Courtyard to be used all year round.

We have put together a Summer Party Proposal; this includes the hire of the Court Yard, food and drink. If you would like to theme your party, or if you would like a bespoke proposal put together for you, then please do not hesitate to contact us, we are more than happy to work with your own ideas, themes and budgets.

We look forward to hearing from you.



The Naval & Military Club

No. 4 St. James's Square

London SW1Y 4JU

T: 0207 827 5723

E: josephine.westerbeek@chesterboyd.co.uk

SUGGESTED TIMINGS....

The timings below are a suggested order, for either a daytime or evening event. The timings can be amended depending on your requirements.

TIMINGS	DAY	or	EVENING
Guests arrive / reception	12.30pm		6.30pm
Food served	1.30pm		7.30pm
Food service ends	3.00pm		9.00pm
Drink service ends	4.30pm		10.30pm
Party ends	5.00pm		11.00pm

PACKAGE INCLUDES

- Sparkling wine and Pimms No. 1 reception
- Unlimited Pimms No. 1, Beer, Wine & Soft Drinks
- A choice of either canapés, barbecue buffet or bowl food
- All staff, tableware, glassware and linen
- On site Event Management

VENUE HIRE

The hire of the Court Yard is £1,750.00 for non members or £1,400.00 for member's events.

MENUS & PRICES

BARBEQUE PACKAGE

- £53.00 per person (the maximum for a BBQ buffet is 250 guests).

BOWL FOOD PACKAGE

- £54.00 per person (the maximum for a reception is 300 guests).

CANAPES PACKAGE

- £47.00 per person (the maximum for a reception is 300 guests).

All prices are exclusive of VAT.



SUMMER BARBEQUE @ THE IN & OUT

These menus are purely ideas; if you would like any other suggestions or if you would like us to create a bespoke menu for your special event, please do not hesitate to contact us to discuss your specific requirements.

Please select your buffet dishes from the list below. Please choose **three items off the grill, 1 hot side, 3 salads & 1 dessert**. All barbeques come with a selection of breads & dips.

Off the grill

Chicken tikka kebabs with mango chutney

Traditional British pork sausages

The In & Out burger

Jerk chicken drumettes

3oz minute steaks

Lamb koftas with mint yoghurt

Salmon with tomato & basil en papillote

Pita bread filled with haloumi & stewed peppers

Hot sides

Jacket potatoes with butter & grated cheddar

Rosemary roast new potatoes

Potato wedges with sour cream

Braised saffron rice

Salads

Mixed leaf

Roquette & parmesan

Greek salad

New potato & spring onion

Coleslaw

Tomato, basil & baby mozzarella

Chick pea, broad bean & chilli with mint yoghurt dressing

Panzanella



Desserts

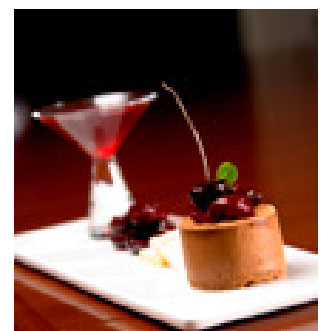
Eton mess with summer berries

White chocolate & vanilla cheese cake with strawberry coulis

Scones with clotted cream & jam

Summer fruit & cream tartlets

Wine & peach syllabub



SUMMER BOWLS @ THE IN & OUT

Package includes a choice of **6 dishes**, we recommend 2 meat, 2 fish, 1 vegetarian and 1 dessert.

COLD

Classic prawn cocktail
Hot smoked salmon, with new potato salad
Coriander seared tuna, cured fennel & fried capers
Salt beef, pickled baby onions, horseradish crème fraîche
Roast chorizo, with chickpeas, honey & mint yoghurt
Flaked ham, with piccalilli
Greek salad, balsamic dressing (v)
Provençal pasta salad, finished with pesto (v)
Vegetable crudities, with cream cheese & chive (v)

HOT

Seared salmon, crushed minted peas
Salt cod croquettes with ratatouille
Sole goujons, tartar sauce & lemon
Sausages & mash with onion gravy
Steak & chips with béarnaise
Goats cheese arancini, tomato relish (v)
Thai green curry with sticky rice (v)
Brie fritter, pea shoots & bois boudran sauce (v)
Crushed new potatoes with mushrooms a la crème

DESSERT

Chocolate brownie, rich chocolate sauce
Vanilla panna cotta, berry compote
Banoffee pie
Chocolate trifle
Tiramisu
Rice pudding & jam sauce
Eton mess

Additional Choices charged at £6.15 per bowl per person.



SUMMER CANAPÉS @ THE IN & OUT

Package includes a choice of **8** canapés:

COLD CANAPÉS

Goat's cheese & olive pissaladeira (v)
Mini baked potato with sour cream & chive (v)
Cheese straws (v)
Tomato & basil palmiers (v)
Smoked salmon croissants
Coriander seared tuna niçoise
Crab, spring onion & lime cucumber cups
Anchovy & tomato tart finished with basil
Coronation chicken bouchée
Foie gras ballotine on toasted brioche
Smoked duck croûte fig & shallot compote
Fillet of beef rosti, horse radish mayo

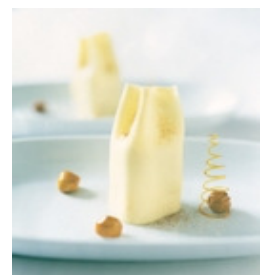
HOT CANAPÉS

Truffle arancini (v)
Baked semolina, artichoke & blue cheese (v)
Vegetable spring rolls with dipping sauce (v)
Pea & parmesan quiche mint hollandaise (v)
Sole goujons, tartar sauce
Smoked haddock & chive fishcake
Filo tiger prawns, sweet chilli sauce
Lemon & rosemary salmon skewer, warm vinaigrette
Lamb koftas mint curried yoghurt
Cumberland cocktail sausages, honey & mustard glaze
Chicken yakatori
Steak sandwich with confit red onion

DESSERT

Bannoffi pie
Chocolate brownie
Lemon meringue pies
Strawberry short bread
Apple crumble tart

Additional canapés are charged at £3.00 per canapé per person.



WINE & DRINKS PACKAGE (included)

RECEPTION (1 hour)

Sparkling wine

Pimms No1. & lemonade

Soft drinks and mineral water

POST RECEPTION DRINKS (unlimited – based on a 3 hour service period)

House white & red wine

Pimms No. 1 & lemonade

Premium bottled beer

Soft drinks and mineral water

- Additional periods will be charged at the rate of £3.00 per person per half hour
- Chester Boyd will reserve the right to offer substitute vintages where necessary

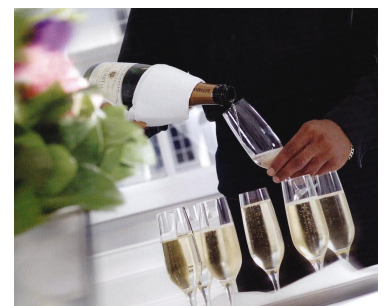
UPGRADES FOR RECEPTION DRINKS (1 hour)

- | | |
|--|------------------------------|
| ▪ Prosecco frizzante spago | Supplement £1.50 per person |
| ▪ House champagne on arrival | Supplement £10.50 per person |
| ▪ Bellini (peach puree & sparkling wine) | Supplement £2.50 per person |
| ▪ Kir Royal (crème de cassis & sparkling wine) | Supplement £2.50 per person |
| ▪ Homemade orange mango & guava Juice | Supplement £1.00 per person |
| ▪ Ringden Farm Juices (<i>Bramley, Bramley & Cox and Cox Pear</i>) | Supplement £1.50 per person |

OTHER UPGRADES

- | | |
|--|-----------------------------|
| ▪ Wine upgrades are available | from £3.00 per person |
| ▪ Branded house spirits for the evening (vodka, gin, whiskey, rum) | Supplement £8.50 per person |
| ▪ Alco pops | Supplement £2.50 per person |
| ▪ We can provide a variety of entertainment options | POA |

All quoted prices are exclusive of VAT.



CLOAKROOM

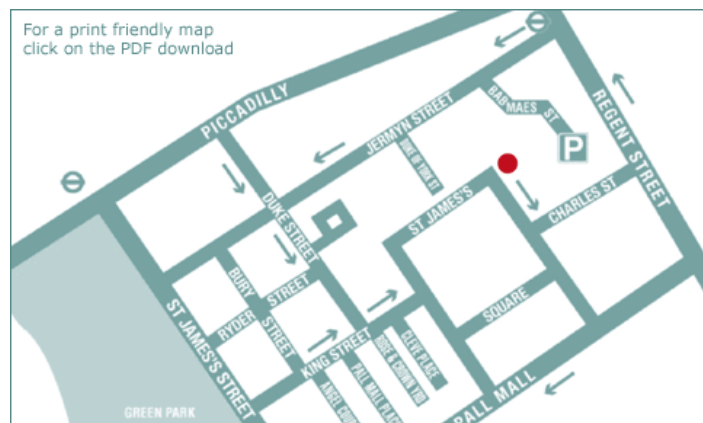
Your guests can help themselves to the cloakroom, but for all events we recommend that you hire a member of staff to man the cloakroom area for the evening. Each member of staff is charged at £12.00 per hour per staff member + VAT. They would start an hour before your guests arrive and finish once the cloakroom is clear. For any cloakrooms not manned by our staff we cannot accept any responsibility for any lost items.

STAFFING RECOMMENDATION

- | | |
|--------------------|-------------------|
| ▪ Under 100 guests | 1 cloakroom staff |
| ▪ 100 – 200 guests | 2 cloakroom staff |
| ▪ 200 – 300 guests | 3 cloakroom staff |

The above recommendation may change depending on the weather report for your event date.

LOCATION OF THE IN & OUT



TUBE

Piccadilly Circus—Piccadilly Line & Bakerloo Line

Green Park—Victoria Line, Jubilee Line & Piccadilly Line

BUS ROUTES

The Club is accessible by a number of bus routes: 3, 6, 9, 12, 13, 15, 23, 88, 94, 139, 159, 453.

To plan your journey or for more journey details please visit <http://www.tfl.gov.uk>

PARKING

There is metered parking on St James's Square and there is a NCP car park about 5 minutes walk from the club.